

**TRAFFIC CONTROL PLAN**  
DATE OF LAST REVISION  
**2017-08-17**



|                                |                               |                                     |
|--------------------------------|-------------------------------|-------------------------------------|
| Contractor Name:               | TCP #                         | Location:                           |
| City of Chilliwack             | TCP 1 of 2                    | Petawawa Rd @ Vedder Rd, Chilliwack |
| Job Description:               | Date:                         |                                     |
| Vedder Bridge Opening Ceremony | August 24th, 2017             |                                     |
| Manual for Work on Roadways    | Traffic Control Figure Number |                                     |
| 2015 Interim Edition           |                               |                                     |
| Contractor Contact:            | Phone:                        | Email:                              |
| Samantha Piper                 | 604-703-2915                  | piper@chilliwack.com                |
| Traffic Plan Contact:          | Phone:                        | Email:                              |
| Genny Scott                    | 604-847-3618                  | genny@streetwisetraffic.ca          |

| LEGEND |                            |
|--------|----------------------------|
|        | TRAFFIC CONTROL PERSONNEL  |
|        | SIGN STAND (TRIPOD)        |
|        | SIGN STAND (WINDMASTER)    |
|        | SIGN FLAGS                 |
|        | BUS PARKING                |
|        | WORKZONE                   |
|        | TRAFFIC BARREL             |
|        | TUBULAR MARKER - TYPE D    |
|        | TRAFFIC CONTROL VEHICLE    |
|        | FLASHING ARROW BOARD (FAB) |
|        | EXISTING BUS STOP          |
|        | RELOCATED BUS STOP         |

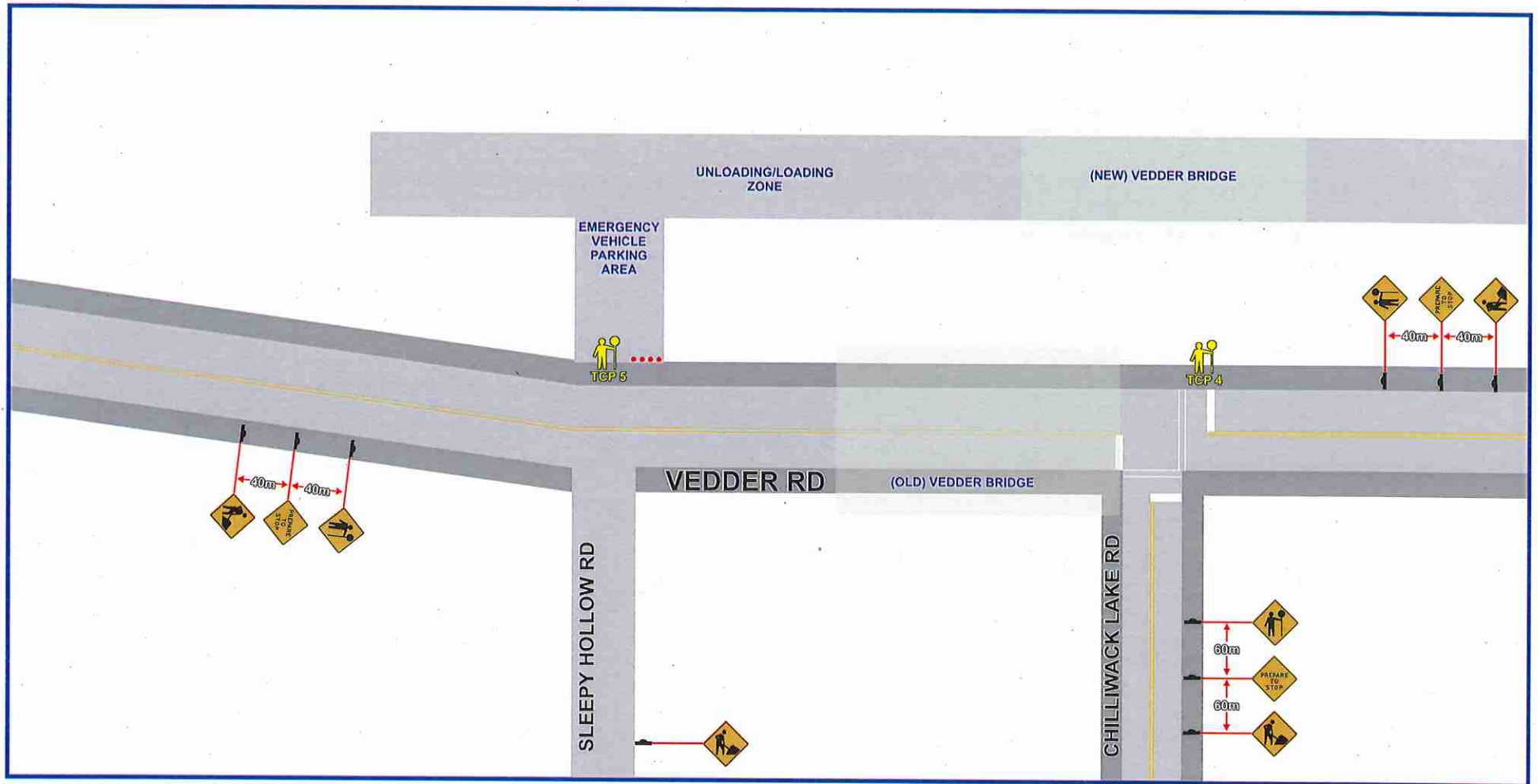
**DRAWING SPECIFIC NOTES**

- TCP 1 to direct VIP Pass holders and Disabled Persons Parking Pass holders to designated parking area
- TCP 2/TCP 3 to stop traffic to allow Pedestrians to use Crosswalk
- TCP 2/TCP 3 to stop traffic to on Vedder Rd after Ceremonies to allow vehicles to exit off Petawawa Rd

**GENERAL NOTES**

- All traffic control shall conform to the MOTI Traffic Management Manual for Work on Roadways 2015
- Signs shown are representations only and the MOTI Catalogue of Standard Traffic Signs should be used for detailed sign design
- Dimensions shown are in meters and are the minimums except as otherwise indicated
- All permanent signage that will conflict with this site will be covered or removed while the works are in effect
- Active Work Zones and Hazards shall be delineated to protect workers and the travelling public
- Maximum distance between cones/delineator/barrel should be 10m
- Tubular markers and signs will be double based and well secured during windy conditions
- Distances may be adjusted due to urban block length
- These pages are best printed on a Tabloid (11x17) page size





**TRAFFIC CONTROL PLAN**  
 DATE OF LAST REVISION  
**2017-08-17**

**Streetwise**  
 TRAFFIC CONTROLLERS LTD  
 TRAFFIC PLAN

|                                |                               |  |
|--------------------------------|-------------------------------|--|
| Contractor Name:               | TCP #                         | Location:                                |
| City of Chilliwack             | TCP 2 of 2                    | Sleepy Hollow Rd @ Vedder Rd, Chilliwack |
| Job Description:               | Dates:                        |  |
| Vedder Bridge Opening Ceremony | August 24th, 2017             |  |
| Manual for Work on Roadways    | Traffic Control Figure Number |  |
| 2015 Interim Edition           |                               |  |
| Contractor Contact:            | Phone:                        | Email:                                   |
| Samantha Piper                 | 604-703-2915                  | piper@chilliwack.com                     |
| Traffic Plan Contact:          | Phone:                        | Email:                                   |
| Genny Scott                    | 604-847-3618                  | genny@streetwisetraffic.ca               |

**LEGEND**

|  |                           |  |                            |
|--|---------------------------|--|----------------------------|
|  | TRAFFIC CONTROL PERSONNEL |  | TRAFFIC BARREL             |
|  | SIGN STAND (TRIPOD)       |  | TUBULAR MARKER - TYPE D    |
|  | SIGN STAND (WINDMASTER)   |  | TRAFFIC CONTROL VEHICLE    |
|  | SIGN FLAGS                |  | FLASHING ARROW BOARD (FAB) |
|  | BUS PARKING               |  | EXISTING BUS STOP          |
|  | WORKZONE                  |  | RELOCATED BUS STOP         |

**DRAWING SPECIFIC NOTES**

- TCP 4 to use push button mechanism on traffic signal in order to allow Pedestrians to cross and to help flush traffic if congested
- TCP 5 to stop traffic if necessary to allow Emergency Vehicles/Equipment Vehicles into and out of designated zone

**GENERAL NOTES**

- All traffic control shall conform to the MOTI Traffic Management Manual for Work on Roadways 2015
- Signs shown are representations only and the MOTI Catalogue of Standard Traffic Signs should be used for detailed sign design
- Dimensions shown are in meters and are the minimums except as otherwise indicated
- All permanent signage that will conflict with this site will be covered or removed while the works are in effect
- Active Work Zones and Hazards shall be delineated to protect workers and the travelling public
- Maximum distance between cones/delineator/barrel should be 10m
- Tubular markers and signs will be double based and well secured during windy conditions
- Distances may be adjusted due to urban block length
- These pages are best printed on a Tabloid (11x17) page size

